

**Ripon
Athletic**



MADE IN
BERLIN, WI.
USA



SAND
KNIT
ATHLETIC KNITWEAR
AND CLOTHING
SAND KNITTING MILLS CORP
BERLIN, WIS.

BASEBALL

Designer for the Pros for 100 Years

SAND
KNIT

1921 - 2021

Proudly Made by Ripon Athletic in Berlin, WI U.S.A.



#5105DF MEN'S VERSA BASEBALL JERSEY

- > Single layer, front and back
- > Hemmed neck with facing (contrasting on one side only)
- > 1/2" Sleeve end facing (contrasting on one side only)
- > Dyfuze label on lower left front, both sides
- > Sizes: XSM - XXLG

AVAILABLE FABRICS

#5105DF - 202 Ultra Flex (Dyfuze)

#Y5105DF YOUTH VERSA BASEBALL JERSEY

- > Single layer, front and back
- > Hemmed neck with facing (contrasting on one side only)
- > 1/2" Sleeve end facing (contrasting on one side only)
- > Dyfuze label on lower left front, both sides
- > Sizes: YSM - YXXLG

AVAILABLE FABRICS

#Y5105DF - 202 Ultra Flex (Dyfuze)



ALL DYFUZE VERSA JERSEYS INCLUDE:

- > Ripon Athletic concept on one or both sides
- > One or two color name on front
- > One or two color numbers, front and back
- > School or mascot logo on right sleeve, both sides
- > Ripon Athletic 'RA' logo on lower left sleeve end, both sides





DF3 METS CONCEPT



DF42 REDWOOD CONCEPT



DF110 SLUGGER CONCEPT



DyFuze *Versa* Concepts

ALL DYFUZE VERSA JERSEYS INCLUDE:

- > Ripon Athletic concept on one or both sides
- > One or two color name on front
- > One or two color numbers, front and back (*Ripon fonts ONLY*)
- > School or mascot logo on right sleeve, both sides
- > Ripon Athletic 'RA' logo on lower left sleeve end, both sides

DF111 CYCLE CONCEPT



DF117 SOX CONCEPT



DF119 LINE DRIVE CONCEPT



DyFuze Baseball

UNIFORMS



#5000DF BASELINE PULLOVER JERSEY

- > N4 Mitered V-neck, self material
- > Pro-curved bottom, extended back
- > Set-in sleeves
- > Sizes: XS - XXL (30-52)

AVAILABLE FABRICS

- #5000DF - 36 Flow Knit II
- #5000DF - 67 Polystretch
- #5000DF - 116 Pro Flex
- #5000DF - 202 Ultra Flex
- #5000DF - 205 Grate Mesh
- #5000DF - 206 Satin Fuze



#5020DF BATTER UP JERSEY

- > Full button front style
- > Set-in sleeves
- > Sizes: XS - XXL (30-52)

AVAILABLE FABRICS

- #5020DF - 36 Flow Knit II
- #5020DF - 67 Polystretch
- #5020DF - 116 Pro Flex
- #5020DF - 202 Ultra Flex
- #5020DF - 205 Grate Mesh
- #5020DF - 206 Satin Fuze



#5040DF DOUBLE A PULLOVER JERSEY

- > Two button legion facing front
- > Set-in sleeves
- > Sizes: XS - XXL (30-52)

AVAILABLE FABRICS

- #5040DF - 36 Flow Knit II
- #5040DF - 67 Polystretch
- #5040DF - 116 Pro Flex
- #5040DF - 202 Ultra Flex
- #5040DF - 205 Grate Mesh
- #5040DF - 206 Satin Fuze



DyFuze Baseball UNIFORMS



#5050DF ML SLEEVELESS JERSEY

- > Full button front style
- > Pro-curved bottom, extended back
- > Sleeveless
- > Sizes: XS - XXLG (30-52)

AVAILABLE FABRICS

#5050DF - 36 Flow Knit II

#5050DF - 67 Polystretch

#5050DF - 116 Pro Flex

#5050DF - 202 Ultra Flex

#5050DF - 205 Grate Mesh

#5050DF - 206 Satin Fuze

Only available with the following Dyfuze concepts: DF2 Yankee & DF4 Tiger



#5120DF SECOND BASE JERSEY

- > Full button front style
- > Pro-curved bottom, extended back
- > Straight raglan sleeves
- > Sizes: XS - XXLG (30-52)

AVAILABLE FABRICS

#5120DF - 36 Flow Knit II

#5120DF - 67 Polystretch

#5120DF - 116 Pro Flex

#5120DF - 202 Ultra Flex

#5120DF - 205 Grate Mesh

#5120DF - 206 Satin Fuze

Only available with the following Dyfuze concepts: DF111 Cycle & DF115 Zinger

#5200DF HOMERUN PULLOVER JERSEY

- > N4 Mitered V-neck, self material
- > Pro-curved bottom, extended back
- > Pro raglan sleeves
- > Sizes: XS - XXLG (30-52)

AVAILABLE FABRICS

#5200DF - 36 Flow Knit II

#5200DF - 67 Polystretch

#5200DF - 116 Pro Flex

#5200DF - 202 Ultra Flex

#5200DF - 205 Grate Mesh

#5200DF - 206 Satin Fuze





#5220DF ON DECK JERSEY

- > Full button front style
- > Pro raglan sleeves
- > Sizes: XS - XXLG (30-52)

AVAILABLE FABRICS

- #5220DF - 36 Flow Knit II
- #5220DF - 67 Polystretch
- #5220DF - 116 Pro Flex
- #5220DF - 202 Ultra Flex
- #5220DF - 205 Grate Mesh
- #5220DF - 206 Satin Fuze



#5240DF LEGION PULLOVER JERSEY

- > Two button legion facing neck
- > Pro raglan sleeves
- > Sizes: XS - XXLG (30-52)

AVAILABLE FABRICS

- #5240DF - 36 Flow Knit II
- #5240DF - 67 Polystretch
- #5240DF - 116 Pro Flex
- #5240DF - 202 Ultra Flex
- #5240DF - 205 Grate Mesh
- #5240DF - 206 Satin Fuze

#5250DF SLEEVELESS LEGION PULLOVER JERSEY

- > Two button legion neck front
- > Pro-curved bottom, extended back
- > Sleeveless
- > Sizes: XS - XXLG (28-50)

AVAILABLE FABRICS

- #5250DF - 36 Flow Knit II
- #5250DF - 67 Polystretch
- #5250DF - 116 Pro Flex
- #5250DF - 202 Ultra Flex
- #5250DF - 205 Grate Mesh
- #5250DF - 206 Satin Fuze

Only available with the following Dyfuze concepts: DF2 Yankee & DF4 Tiger



DYFUZE JERSEY OPTIONS

- Sizes over XXLG (52) - per size
- 2" Longer body
- False button front
- Dyfuze surname



DyFuze Baseball Concepts



DF2 YANKEE CONCEPT

Available on all styles



DF3 METS CONCEPT

Available on raglan sleeve styles ONLY



DF4 TIGER CONCEPT

Available on all full-button styles



DF8 PIRATES CONCEPT

Available on raglan sleeve styles ONLY





ALL DYFUZE JERSEYS INCLUDE:

- > Ripon Athletic concept
- > One or two color name on front and/or back
- > One or two color numbers, front and back
- > School or mascot logo on right sleeve
- > Ripon Athletic 'RA' logo on lower left sleeve end



DF111 CYCLE CONCEPT

Available on raglan sleeve styles ONLY



DF114 CUTTER CONCEPT

Available on set-in sleeve styles ONLY



DF115 ZINGER CONCEPT

Available on raglan style #5120 ONLY

DF117 SOX CONCEPT

Available on set-in/raglan sleeve pullovers ONLY



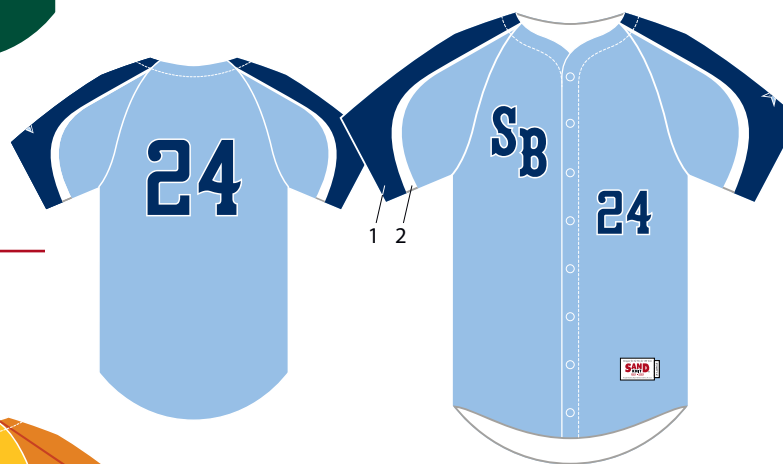
DyFuze Baseball Concepts



DF118 LEAD OFF CONCEPT
Available on raglan sleeve styles **ONLY**



DF119 LINE DRIVE CONCEPT
Available on raglan sleeve styles **ONLY**



DF121 SINKER CONCEPT
Available on raglan sleeve styles **ONLY**



DF122 BUNT CONCEPT
Available on raglan sleeve styles **ONLY**





ALL DYFUZE JERSEYS INCLUDE:

- > Ripon Athletic concept
- > One or two color name on front and/or back
- > One or two color numbers, front and back
- > School or mascot logo on right sleeve
- > Ripon Athletic 'RA' logo on lower left sleeve end



DF123 E.R.A. CONCEPT

Available on raglan sleeve styles **ONLY**



DF124 BLOOPER CONCEPT

Available on raglan sleeve styles **ONLY**



DF918 PISTON CONCEPT

Available on set-in sleeve styles **ONLY**

DFSM75 ASTRO CONCEPT

Available on set-in sleeve pullovers **ONLY**



DyFuze Baseball UNIFORMS

#5820DF ASTRO PANT

- RELAXED FIT
- Slanted tunnel loops & four front belt loops
- 2 1/2" Heavy ribbed elastic waist
- Two snap closure front with brass zipper front
- Two set-in pockets on back
- Double knees, hemmed leg openings, 32" inseam
- Sizes: XS - XXLG

AVAILABLE FABRICS

#5820DF - 67 Poly Stretch: solid color

#5820DF - 67 Poly Stretch: 1 color Pro Pinstripes

OPTIONS

Sizes over XXLG (44), per size

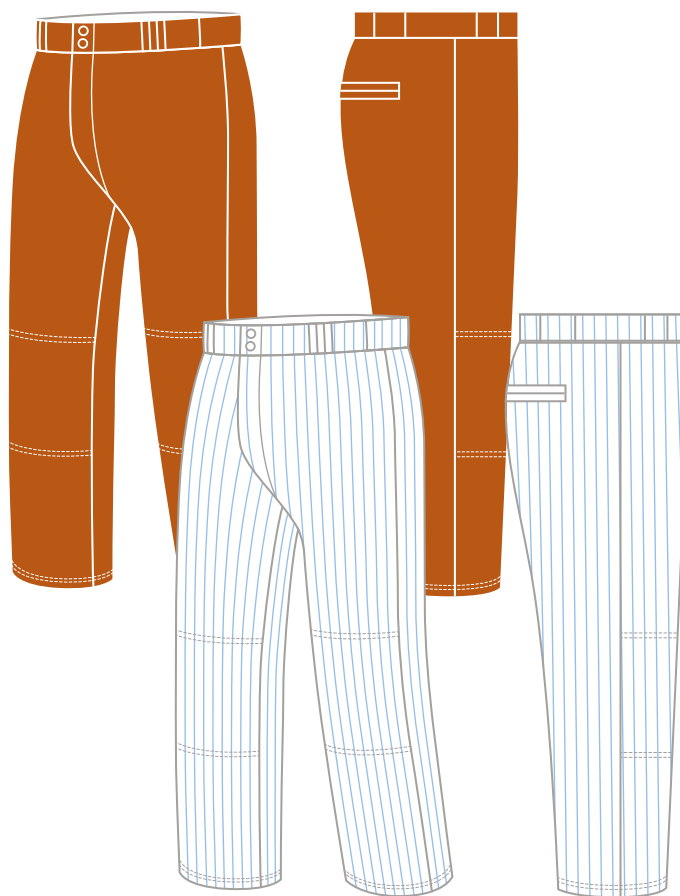
Longer inseam, per 2"

Shorter inseam, per 1"

1/8" or 1/4" Warp knit braid one row each side

1/2" or 1" Warp knit braid one row each side

1 1/2" Warp knit braid one row each side



#5600DF GRAND SLAM PANT

- TRADITIONAL CUT
- Three tunnel loops & two belt loops
- 2 1/2" Flat elastic waistband
- Two snap closure front with brass zipper front
- Two set-in pockets on back
- Double knees, elastic leg openings, 25" inseam
- Sizes: XS - XXLG

AVAILABLE FABRIC

#5600DF - 6714 Poly Stretch: solid color

#5600DF - 6714 Poly Stretch: 1 color Pro Pinstripes

OPTIONS

Sizes over XXLG (44), per size

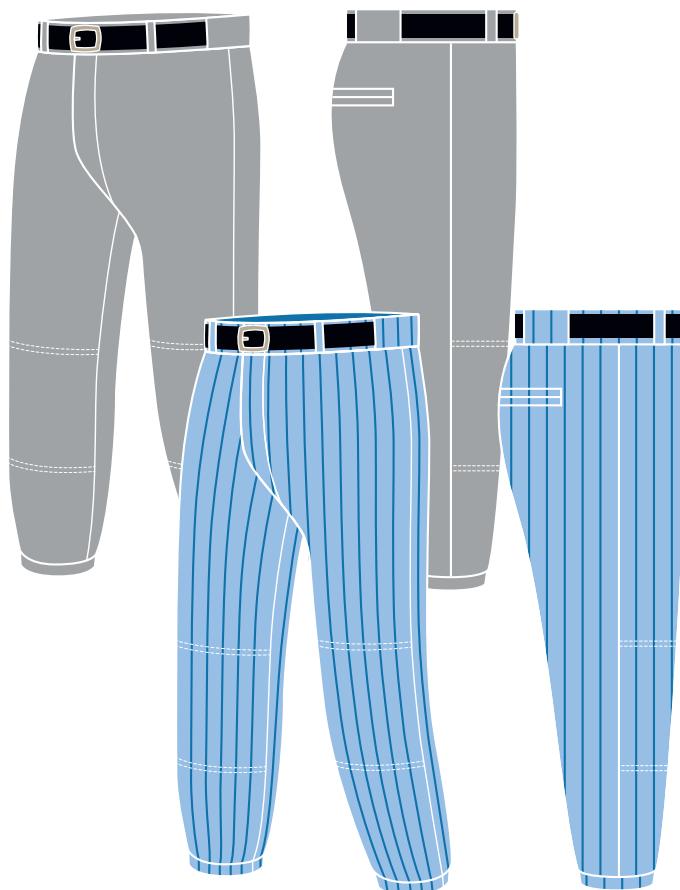
Longer inseam, per 2"

Shorter inseam, per 1"

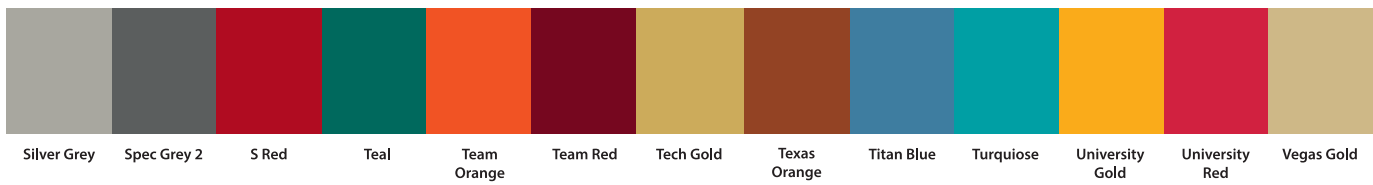
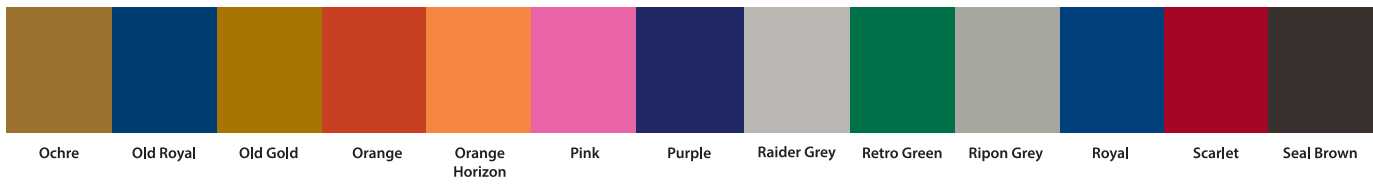
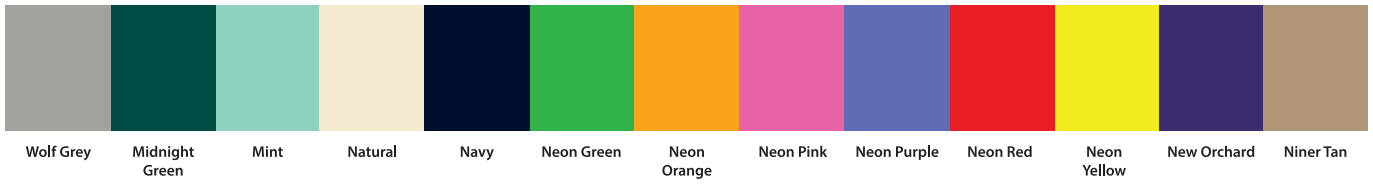
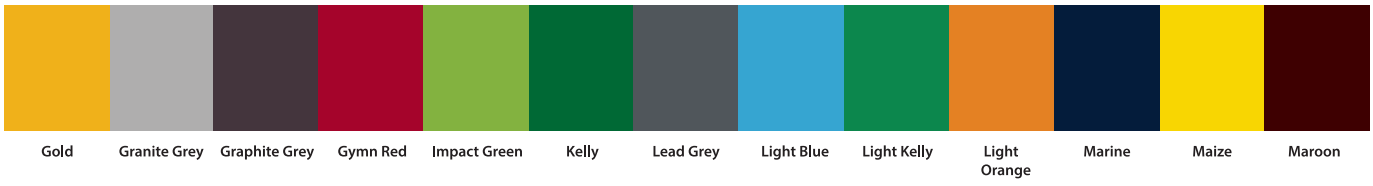
1/8" or 1/4" Warp knit braid one row each side

1/2" or 1" Warp knit braid one row each side

1 1/2" Warp knit braid one row each side



DyFuze Colors



DYFUZE PATTERNS



CLASSIC Baseball UNIFORMS

#5000 BASELINE PULLOVER JERSEY

- > 1" Mitered V-neck, Rib Knit or self-material
- > Pro-curved bottom, extended back
- > Set-in sleeves
- > Sizes: XS - XXLG (30-52)

AVAILABLE FABRICS

#5000 - 36 Flow Knit II

#5000 - 67 Polystretch

#5000 - 116 Pro Flex

#5000 - 55 Durastretch

#5000 - 56 Duralite

#5000 - 74 Durasoft



#5020 BATTER UP JERSEY

- > Full button front
- > Pro-curved bottom, extended back
- > Set-in sleeves
- > Sizes: XS - XXLG (30-52)

AVAILABLE FABRICS

#5020 - 36 Flow Knit II

#5020 - 67 Polystretch

#5020 - 116 Pro Flex

#5020 - 55 Durastretch

#5020 - 56 Duralite

#5020 - 74 Durasoft

#5030 RANGER PULLOVER JERSEY

- > Two button front, Rib Knit or self-material neck
- > Pro-curved bottom, extended back
- > Set-in sleeves
- > Sizes: XS - XXLG (30-52)

AVAILABLE FABRICS

#5030 - 36 Flow Knit II

#5030 - 67 Polystretch

#5030 - 116 Pro Flex

#5030 - 55 Durastretch

#5030 - 56 Duralite

#5030 - 74 Durasoft





#5040 DOUBLE A PULLOVER JERSEY

- > Two button legion front
- > Pro-curved bottom, extended back
- > Set-in sleeves
- > Sizes: XS - XXLG (30-52)

AVAILABLE FABRICS

- #5040 - 36 Flow Knit II
- #5040 - 67 Polystretch
- #5040 - 116 Pro Flex
- #5040 - 55 Durastretch
- #5040 - 56 Duralite
- #5040 - 74 Durasoft



#5050 ML SLEEVELESS JERSEY

- > Full button front, tapered cut
- > Pro-curved bottom, extended back
- > Sleeveless
- > Sizes: XS - XXLG (30-52)

AVAILABLE FABRICS

- #5050 - 36 Flow Knit II
- #5050 - 67 Polystretch
- #5050 - 116 Pro Flex
- #5050 - 55 Durastretch
- #5050 - 56 Duralite
- #5050 - 74 Durasoft

#5200 HOMERUN PULLOVER JERSEY

- > 1" Mitered V-neck, Rib Knit or self-material
- > Pro-curved bottom, extended back
- > Pro raglan sleeveless
- > Sizes: XS - XXLG (30-52)

AVAILABLE FABRICS

- #5200 - 36 Flow Knit II
- #5200 - 67 Polystretch
- #5200 - 116 Pro Flex
- #5200 - 55 Durastretch
- #5200 - 56 Duralite
- #5200 - 74 Durasoft



CLASSIC Baseball UNIFORMS

#5220 ON DECK JERSEY

- > Full button front
- > Pro-curved bottom, extended back
- > Pro raglan sleeves
- > Sizes: XS - XXL (30-52)

AVAILABLE FABRICS

#5220 - 36 Flow Knit II

#5220 - 67 Polystretch

#5220 - 116 Pro Flex

#5220 - 55 Durastretch

#5220 - 56 Duralite

#5220 - 74 Durasoft



#5230 RANGER III SLEEVELESS JERSEY

- > Two button front, Rib Knit or self-material
- > Pro-curved bottom, extended back
- > Pro raglan sleeves
- > Sizes: XS - XXL (30-52)

AVAILABLE FABRICS

#5230 - 36 Flow Knit II

#5230 - 67 Polystretch

#5230 - 116 Pro Flex

#5230 - 55 Durastretch

#5230 - 56 Duralite

#5230 - 74 Durasoft

#5240 LEGION PULLOVER JERSEY

- > Two button legion front
- > Pro-curved bottom, extended back
- > Pro raglan sleeves
- > Sizes: XS - XXL (30-52)

AVAILABLE FABRICS

#5240 - 36 Flow Knit II

#5240 - 67 Polystretch

#5240 - 116 Pro Flex

#5240 - 55 Durastretch

#5240 - 56 Duralite

#5240 - 74 Durasoft





#5700 *ML TUNNEL PANT*

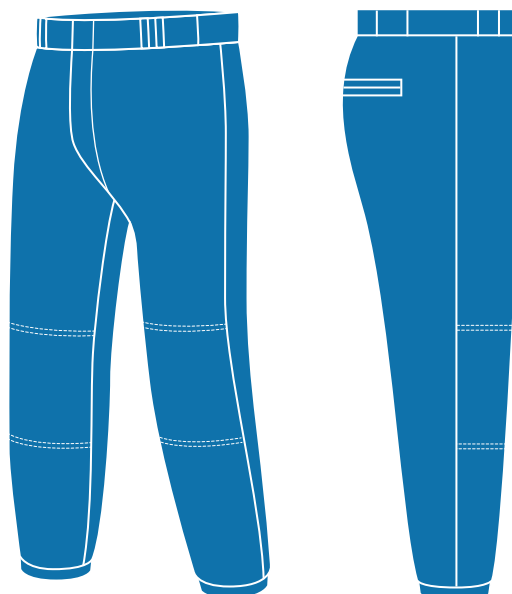
- › Tapered legs
- › Slanted tunnel loops & four front belt loops
- › 2 1/2" Heavy ribbed elastic waist
- › Inside button closure front with Major League zipper fly
- › Two set-in pockets on back
- › Double knees, hemmed leg openings, 30" inseam
- › Sizes: XS - XXL

AVAILABLE FABRICS

#5700 - 67 Polystretch

#5700 - 55 Durastretch

#5700 - 155 Pro Lite



#5800 *CLEMSON PANT*

- › Tapered legs
- › Slanted tunnel loops
- › 2 1/2" Heavy ribbed elastic waist
- › Two snap closure front with brass zipper front
- › Double knees, hemmed leg openings, 32" inseam
- › Sizes: XS - XXL

AVAILABLE FABRICS

#5800 - 67 Polystretch

#5800 - 55 Durastretch

#5800 - 155 Pro Lite

#5820 *ASTRO PANT*

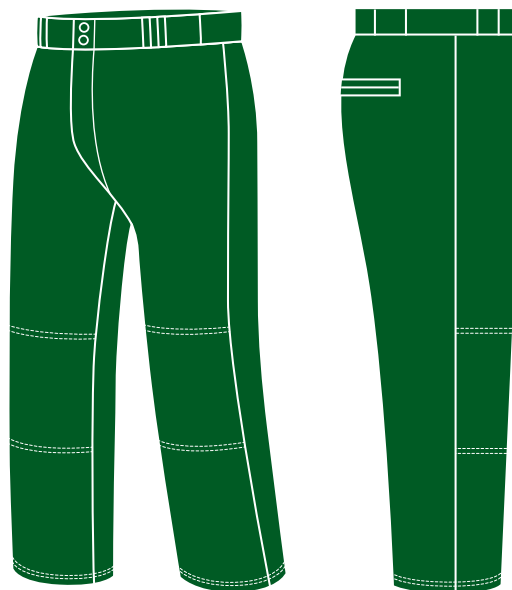
- › RELAXED FIT
- › Slanted tunnel loops & four front belt loops
- › 2 1/2" Heavy ribbed elastic waist
- › Two snap closure front with brass zipper
- › Two set-in pockets on back
- › Double knees, hemmed leg openings, 32" inseam
- › Sizes: XS - XXL

AVAILABLE FABRICS

#5820 - 67 Polystretch

#5820 - 55 Durastretch

#5820 - 155 Pro Lite



MADE IN
USA

STOCK Baseball PANTS

#5827 ASTRO RIDER PANT

- > Four panel pant, relaxed fit
- > 2 1/2" Elastic waistband
- > Zipper fly front
- > Two snap closure front
- > Two set-in pockets on back without buttons
- > Four belt and 3 tunnel loops
- > Double knees
- > Ripon Athletic emblem on back tunnel loop
- > Elastic leg openings *or* hemmed leg ends
- > Inseams available up to 36" - *please specify*
- > Sizes: XS - XXLG

AVAILABLE FABRICS

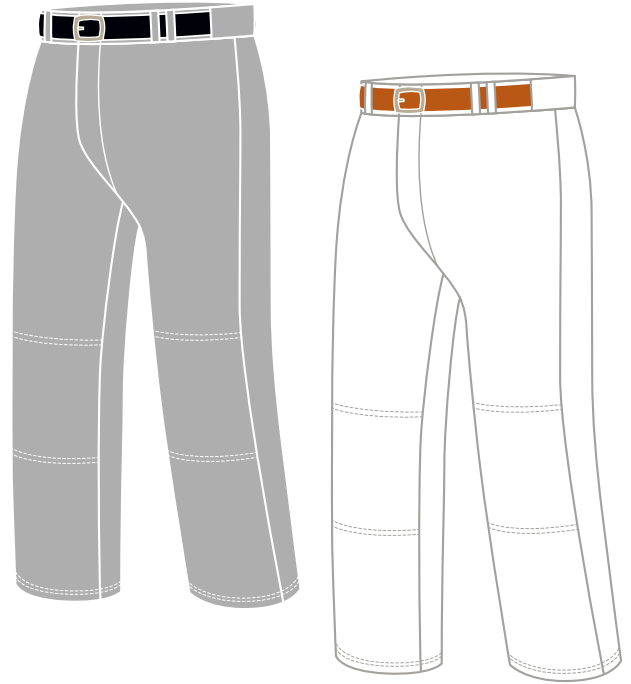
#5827 - 67 Polystretch: Granite Grey

#5827 - 67 Polystretch: White

OPTIONS

1/8" or 1/4" Warp knit braid down sides

1/2" Warp knit braid down sides



BASEBALL PANT EXTRAS

Sizes over XXLG - per size

Knicker length, 19" inseam

1/8" or 1/4" Warp knit braid one row each side

1/2" or 1" Warp knit braid one row each side

1 1/2" Warp knit braid one row each side

**Ripon
Athletic** 

 MADE IN
BERLIN, WI.
USA

CLASSIC Baseball Concepts

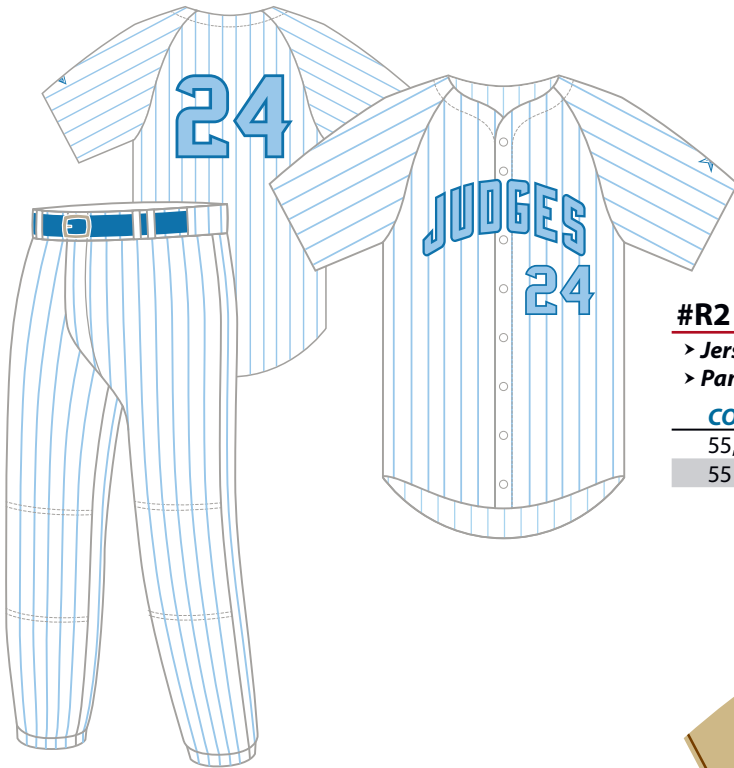


#R1 BRAVES JERSEY/PANT CONCEPT

- > **Jersey** - 1/2" Warp braid down front, neck & sleeve ends - M1, M2, M3
- > **Pant** - 1/2" Warp braid down sides & three tunnel loops - M1, M2, M3

CONCEPT AVAILABLE ON:

All full button front jerseys
All pants with tunnel loops

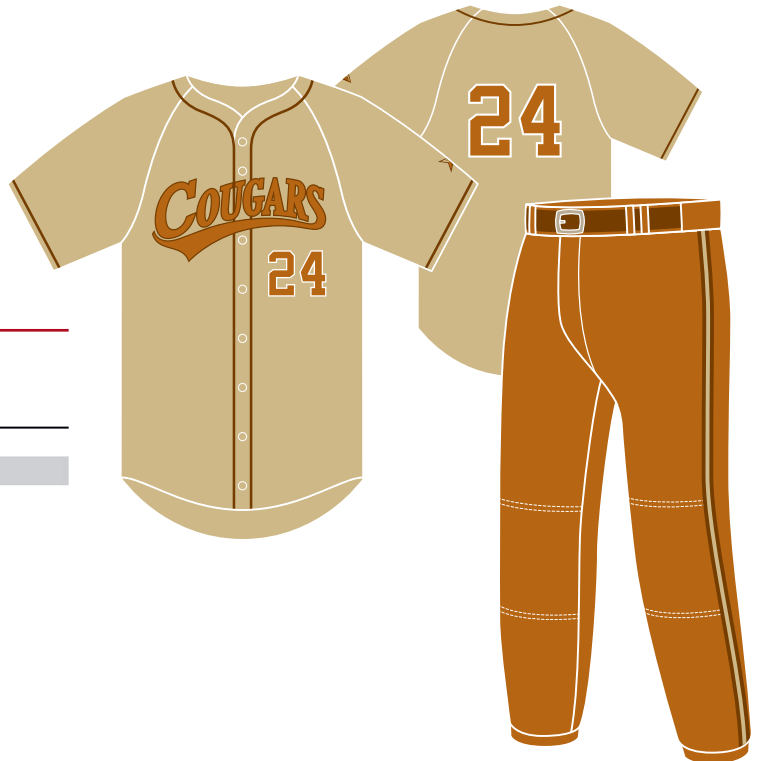


#R2 YANKEE JERSEY/PANT CONCEPT

- > **Jersey** - 1 Color Pro Pinstripes
- > **Pant** - 1 Color Pro Pinstripes

CONCEPT AVAILABLE ON:

55, 56, 74 & 155 fabric on all jerseys
55 & 155 fabric on all pants



#R4 TIGERS JERSEY/PANT CONCEPT

- > **Jersey** - 1/4" M1 Braid down front, around neck & sleeve ends
- > **Pant** - 1/4" M1 Braid down sides

CONCEPT AVAILABLE ON:

All jerseys
All pants

CLASSIC Baseball Concepts

#R7 PADRES JERSEY CONCEPT

- > **Jersey** - Uni-shoulder sleeve on front & back
- > **Jersey** - 1/4" M1 Norsky braid sewn on front seam only
- > **Jersey** - "Padres" insert around armholes

CONCEPT AVAILABLE ON:

All set-in sleeve jerseys



#R110 SLUGGER JERSEY CONCEPT

- > **Jersey** - 3" Side inserts

CONCEPT AVAILABLE ON:

All jerseys



#R111 CYCLE JERSEY CONCEPT

- > **Jersey** - Curved underarm, upper body front & back inserts
- > **Jersey** - 1/4" M1 Braid sewn around sleeve ends

CONCEPT AVAILABLE ON:

All raglan sleeve jerseys





#R112 BP JERSEY CONCEPT

> Jersey - Underarm, upper front, back and side inserts

CONCEPT AVAILABLE ON:

All jerseys



#R113 ARK JERSEY CONCEPT

> Jersey - "Ark" front, back, shoulder, side & underarm inserts

> Jersey - 1/4" M1 Braid sewn around neck & down front

CONCEPT AVAILABLE ON:

All raglan sleeve jerseys



#R114 CUTTER JERSEY CONCEPT

> Jersey - "Cutter" front, back, shoulder, side & underarm inserts

> Jersey - 1/4" M1 Braid around exact sleeve ends

CONCEPT AVAILABLE ON:

All set-in sleeve jerseys



#R918 PISTON JERSEY CONCEPT

> Jersey - "Piston" lower sleeve, sleeve end & front body inserts

CONCEPT AVAILABLE ON:

All set-in sleeve jerseys



CLASSIC Baseball Concepts

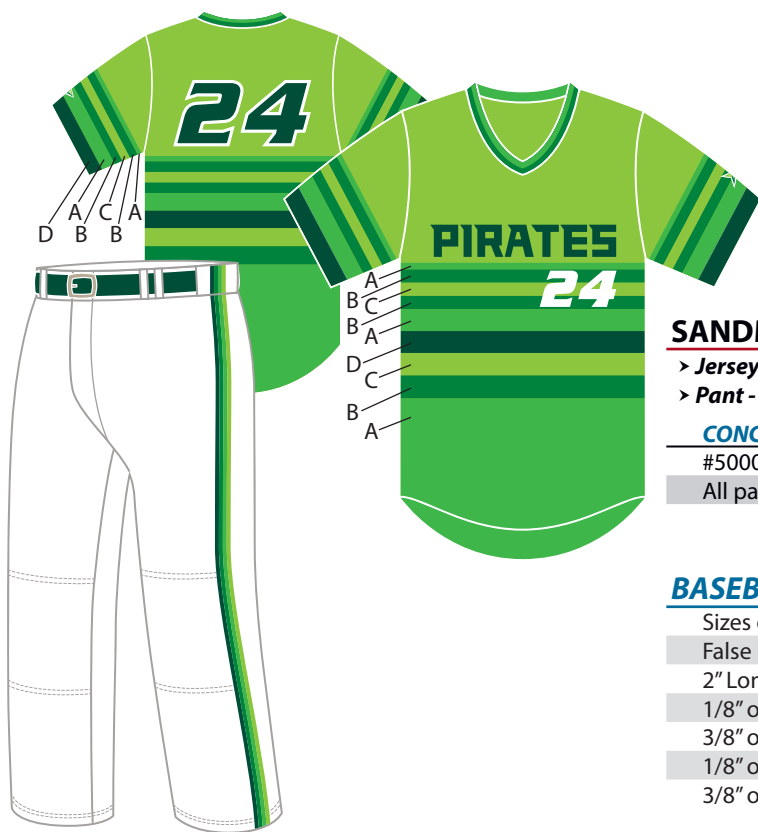


SANDMARK '71' PITTSBURGH JERSEY/PANT CONCEPT

- > **Jersey** - 3" M3 Warp knit braid around exact sleeve ends
- > **Pant** - 1 1/2" M3 Warp knit braid down sides

CONCEPT AVAILABLE ON:

- All jerseys
- All pants



SANDMARK '75' ASTRO JERSEY/PANT CONCEPT

- > **Jersey** - "Astro" body & sleeve striping
- > **Pant** - 1" M4 Warp knit braid down sides

CONCEPT AVAILABLE ON:

- #5000 Jersey **ONLY**
- All pants

BASEBALL JERSEY EXTRAS

- Sizes over XXLG - per size
- False button front
- 2" Longer body
- 1/8" or 1/4" Braid around neck & down front
- 3/8" or 1/2" Braid around neck and down front
- 1/8" or 1/4" Sleeve end or neck to sleeve end braid
- 3/8" or 1/2" Sleeve end or neck to sleeve end braid



WARHAWKS

24

Gators

24

PACKAGE A ONE COLOR BLOCK OR SCRIPT NAME & NUMBERS

- > 3" Block Style: Full Block, Texas Block or Eagle Block font
- > Standard arch or straight
- or
- > 3" Script Style: Athletic Script with or without tail
- > Slightly slanted or straight
- > 4" Number on front, same font as name
- > 8" Number on back, same font as name

PACKAGE B TWO COLOR BLOCK OR SCRIPT NAME & NUMBERS

- > 3" Block Style: Full Block, Texas Block or Eagle Block font
- > Standard arch or straight
- or
- > 3" Script Style: Athletic Script with or without tail
- > Slightly slanted or straight
- > 4" Number on front, same font as name
- > 8" Number on back, same font as name

RAIDERS

24

Riverside

24

SPARTANS

Patriots

PACKAGE C ONE COLOR BLOCK OR SCRIPT NAME & NUMBERS

- > 3" Block Style: Full Block, Texas Block or Eagle Block font
- > Standard arch or straight
- or
- > 3" Script Style: Athletic Script with or without tail
- > Slightly slanted or straight
- > 8" Number on back, same font as name

PACKAGE D TWO COLOR BLOCK OR SCRIPT NAME & NUMBERS

- > 3" Block Style: Full Block, Texas Block or Eagle Block font
- > Standard arch or straight
- or
- > 3" Script Style: Athletic Script with or without tail
- > Slightly slanted or straight
- > 8" Number on back, same font as name

JUDGES

Cardinals



BRAID COLOR OPTIONS

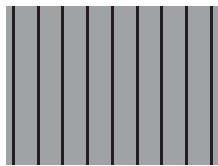


BRAID DESIGN OPTIONS

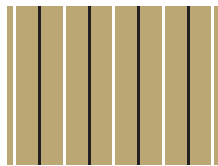


PINSTRIPE PATTERNS

Pro Pinstripe - 1 Color 1/8" stripe/1" body
 Pro Pinstripe - Alternating color 1/8" stripe/1" body
Other options available, for more information call your Ripon Representative



One Color Pro Pinstripe
 (1/8" stripe/1" body)



Alternating Pro Pinstripe
 (1/8" stripe/1" body)





DyFuze by RIPON ATHLETIC
 Made in the U.S.A.

#4900 PRO COMPRESSION FIT SHIRT

- › 3/4" Crew neck
- › Set-in half sleeves
- › Form fit contoured body
- › Straight hemmed bottom
- › Heat set label in back neck
- › Sizes: SM - XXL

AVAILABLE FABRIC

#15 - Lycra Lyte

#4902 SLEEVELESS PRO COMPRESSION FIT SHIRT

- › 3/4" Crew neck
- › Sleeveless
- › Form fit contoured body
- › Straight hemmed bottom
- › Heat set label in back neck
- › Sizes: SM - XXL

AVAILABLE FABRIC

#15 - Lycra Lyte



See page 97 for available colors





Fabrics

Colors

	36 Flow Knit II	55 DuraStretch	56 Duralite	67 Polystretch	74 Durasoft	116 Pro Flex	155 Pro Lite
01 Maroon	X	X	X		X		X
02 Cardinal	X	X	X		X		X
03 Scarlet		X	X		X		X
04 Brick Red							
05 Vegas Gold	X	X	X		X		X
06 Tech Gold		X	X		X		X
07 Old Gold		X	X		X		X
08 Gold	X	X	X		X	X	X
09 Navy	X	X	X	X	X		X
10 Royal	X	X	X		X	X	X
11 Light Blue	X	X	X		X		X
12 Kelly	X	X	X		X	X	X
13 Purple	X	X	X		X		X
14 White	X	X	X	X	X	X	X
15 Black	X	X	X	X	X		X
19 Light Orange		X	X		X		X
20 Dodger Grey		X	X		X		X
21 Granite Grey							
22 Silver Grey	X	X	X	X	X		X
23 Brown	X	X	X		X		X
24 Lions Grey		X	X				X
26 Burnt Orange	X	X	X		X		X
27 Ripon Grey		X	X		X		X
28 Dark Green		X	X		X	X	X
29 Aqua		X	X				X
31 Turquoise		X	X				X
34 Charcoal Grey							
35 Collegiate Blue		X	X				X
37 S-Red		X	X	X	X		X
38 Light Navy		X	X				X
40 Texas Orange	X						
42 Jaguar Blue							
53 Natural							
58 Graphite Grey		X	X		X	X	X
66 Pink							
68 Impact Green		X	X				X
74 Hoosier Red							
78 Titan Blue		X	X				X
92 Giants Grey							
110 UCLA Blue							
120 Lead Grey							

* Contact a customer service representative for availability.