

9

Ripon Athletic

BERLIN

MADE IN BERLIN, WI. USA



SOCCER

Designer for the Pros for 100 Years

SAND KNIT
1921 - 2021

Proudly Made by Ripon Athletic in Berlin, WI U.S.A.

Men's DyFuze SOCCER Uniforms

#950DF MEN'S SOCCER JERSEY

- > Pullover style
- > 1/4 Length set-in sleeves, hemmed
- > Mitered V-neck
- > Straight hemmed bottom
- > Sizes: SM - XXLG

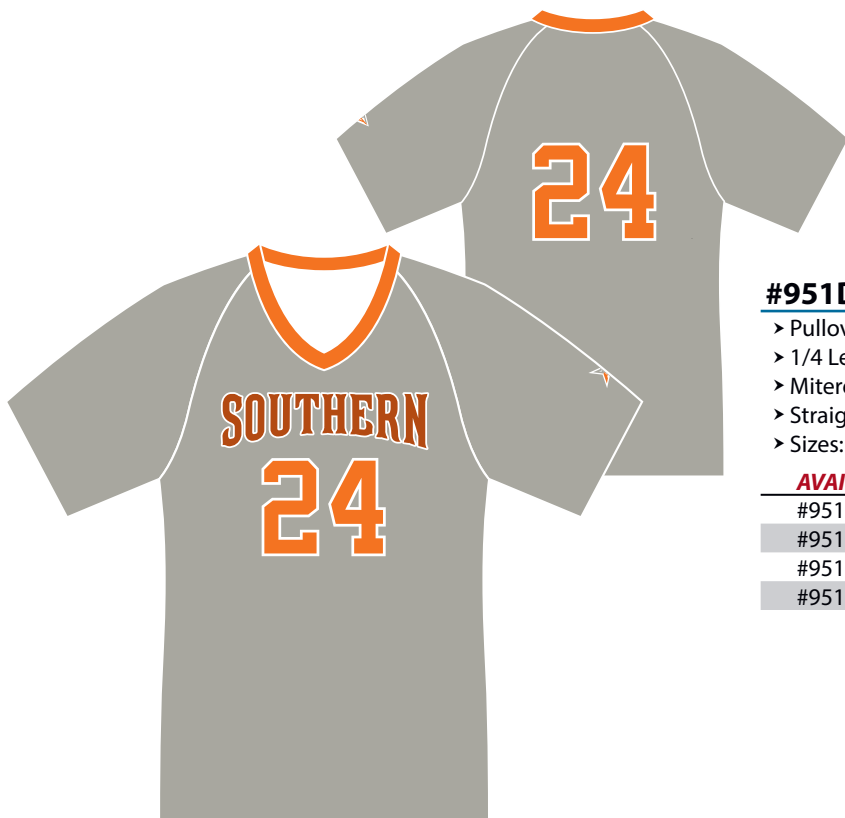
AVAILABLE FABRICS

#950DF - 15 Lycra Lyte

#950DF - 116 Pro Flex

#950DF - 205 Grate Mesh

#950DF - 206 Satin Fuze



#951DF MEN'S SOCCER JERSEY

- > Pullover style
- > 1/4 Length raglan sleeves, hemmed
- > Mitered V-neck
- > Straight hemmed bottom
- > Sizes: SM - XXLG

AVAILABLE FABRICS

#951DF - 15 Lycra Lyte

#951DF - 116 Pro Flex

#951DF - 205 Grate Mesh

#951DF - 206 Satin Fuze

DyFuze by RIPON ATHLETIC
Made in the U.S.A.





#970DF MEN'S SOCCER SHORT

- > Two panel
- > Four needle waistband
- > 1 1/2" Elastic waistband with Pro drawstring
- > 7" Inseam
- > Sizes: XSM - XXLG

AVAILABLE FABRICS

#970DF - 15 Lycra Lyte

#970DF - 116 Pro Flex

#970DF - 205 Grate Mesh

#970DF - 206 Satin Fuze



#952DF MEN'S LS SOCCER JERSEY

- > Pullover style
- > Full length set-in sleeves, hemmed
- > Mitered V-neck
- > Straight hemmed bottom
- > Sizes: SM - XXLG

AVAILABLE FABRICS

#952DF - 15 Lycra Lyte

#952DF - 116 Pro Flex

#952DF - 205 Grate Mesh

#952DF - 206 Satin Fuze



#953DF MEN'S LS RAGLAN SOCCER JERSEY

- > Pullover style
- > Full length raglan sleeves, hemmed
- > Mitered V-neck
- > Straight hemmed bottom
- > Sizes: SM - XXLG

AVAILABLE FABRICS

#953DF - 15 Lycra Lyte

#953DF - 116 Pro Flex

#953DF - 205 Grate Mesh

#953DF - 206 Satin Fuze



Women's DyFuze SOCCER Uniforms

#960DF WOMEN'S SOCCER JERSEY

- > Pullover style, tapered body
- > 1/4 Length set-in sleeves, hemmed
- > Mitered V-neck
- > Straight hemmed bottom
- > Sizes: SM - XXLG

AVAILABLE FABRICS

- #960DF - 15 Lycra Lyte
- #960DF - 116 Pro Flex
- #960DF - 205 Grate Mesh
- #960DF - 206 Satin Fuze



#961DF WOMEN'S RAGLAN SOCCER JERSEY

- > Pullover style
- > 1/4 Length raglan sleeves, hemmed
- > Mitered V-neck
- > Straight hemmed bottom
- > Sizes: SM - XXLG

AVAILABLE FABRICS

- #961DF - 15 Lycra Lyte
- #961DF - 116 Pro Flex
- #961DF - 205 Grate Mesh
- #961DF - 206 Satin Fuze

DyFuze by RIPON ATHLETIC
Made in the U.S.A.



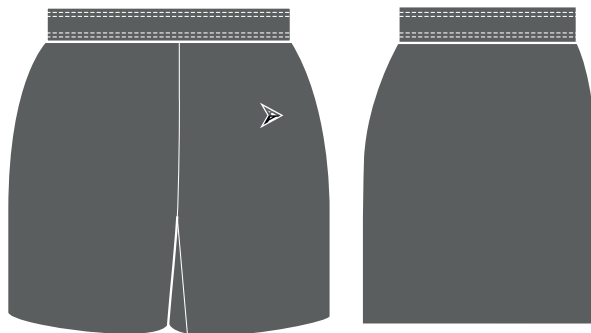


#980DF WOMEN'S SOCCER SHORT

- › Two panel
- › Four needle waistband
- › 1 1/2" Elastic waistband with Pro drawstring
- › 3 1/2" Inseam
- › Sizes: XSM - XXLG

AVAILABLE FABRICS

- #980DF - 15 Lycra Lyte
- #980DF - 116 Pro Flex
- #980DF - 205 Grate Mesh
- #980DF - 206 Satin Fuze



#962DF WOMEN'S LS SOCCER JERSEY

- › Pullover style, tapered body
- › Full length set-in sleeves, hemmed
- › Mitered V-neck
- › Straight hemmed bottom
- › Sizes: SM - XXLG

AVAILABLE FABRICS

- #962DF - 15 Lycra Lyte
- #962DF - 116 Pro Flex
- #962DF - 205 Grate Mesh
- #962DF - 206 Satin Fuze



#963DF WOMEN'S LS RAGLAN SOCCER JERSEY

- › Pullover style, tapered body
- › Full length raglan sleeves, hemmed
- › Mitered V-neck
- › Straight hemmed bottom
- › Sizes: SM - XXLG

AVAILABLE FABRICS

- #963DF - 15 Lycra Lyte
- #963DF - 116 Pro Flex
- #963DF - 205 Grate Mesh
- #963DF - 206 Satin Fuze



DyFuze SOCCER Concepts

DF217 FLOATER CONCEPT

Available on set-in sleeves styles ONLY



DF223 PEPPER CONCEPT

Available on all sleeves styles, side seam moved to back



DF233 FLIGHT CONCEPT

Available on set-in sleeves styles ONLY



ALL DYFUZE UNIFORMS INCLUDE:

- > 1 or two 2 name/logo on front and/or back
- > 1 or 2 color numbers on front or back (*Ripon fonts ONLY*)
- > School or mascot logo below back of neck
- > School or mascot logo on shorts, 1 or 2 locations
- > Ripon Athletic 'RA' logo in standard locations

DF260 SWEEPER CONCEPT

Available on all sleeves styles



DF261 HEADER CONCEPT

Available on raglan sleeves styles ONLY

DF262 WINGER CONCEPT

Available on raglan sleeves styles ONLY



DyFuze SOCCER Concepts

DF263 FAKEOVER CONCEPT

Available on all sleeves styles



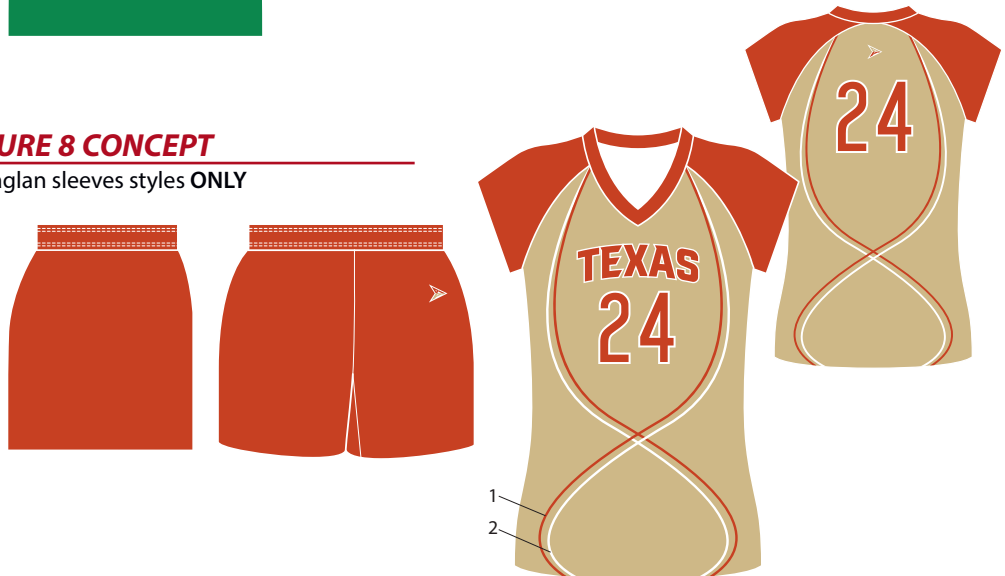
DF426 WEDGE CONCEPT

Available on all sleeves styles



DF701 FIGURE 8 CONCEPT

Available on raglan sleeves styles ONLY



ALL DYFUZE UNIFORMS INCLUDE:

- > 1 or two 2 name/logo on front and/or back
- > 1 or 2 color numbers on front or back (*Ripon fonts ONLY*)
- > School or mascot logo below back of neck
- > School or mascot logo on shorts, 1 or 2 locations
- > Ripon Athletic 'RA' logo in standard locations



DF702 FANG CONCEPT

Available on all sleeves styles



DF708 GC CONCEPT

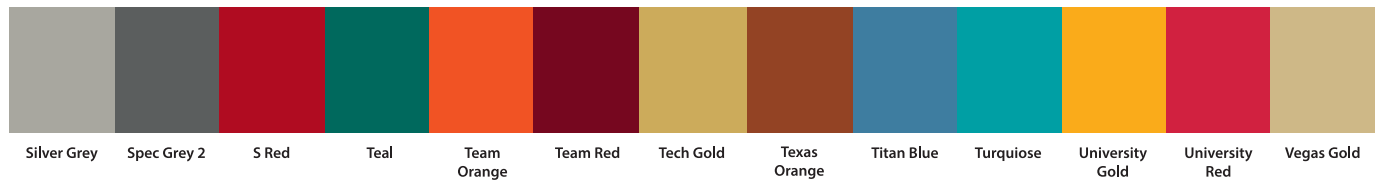
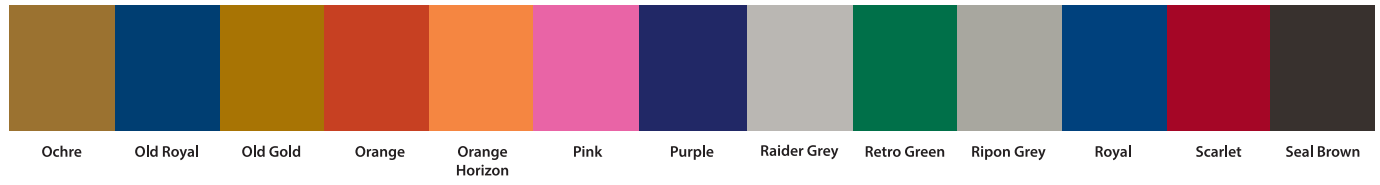
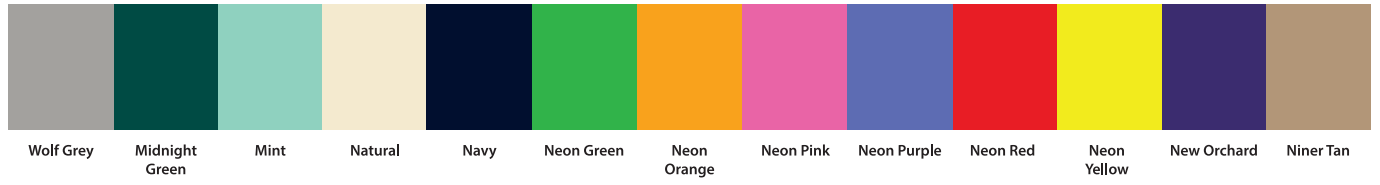
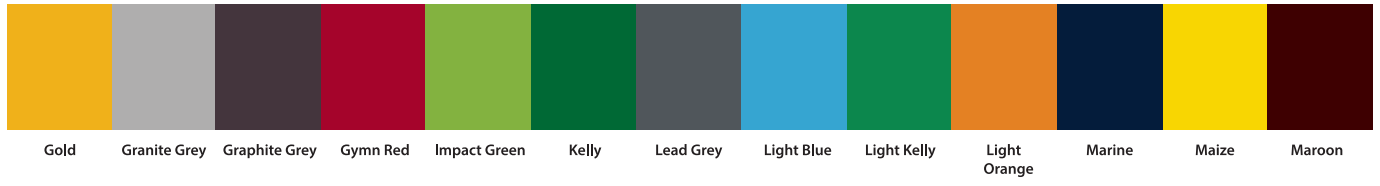
Available on all sleeves styles, side seam moved to back

DF710 PICK N' ROLL CONCEPT

Available on all sleeves styles, side seam moved to back



DyFuze Colors



DYFUZE PATTERNS

